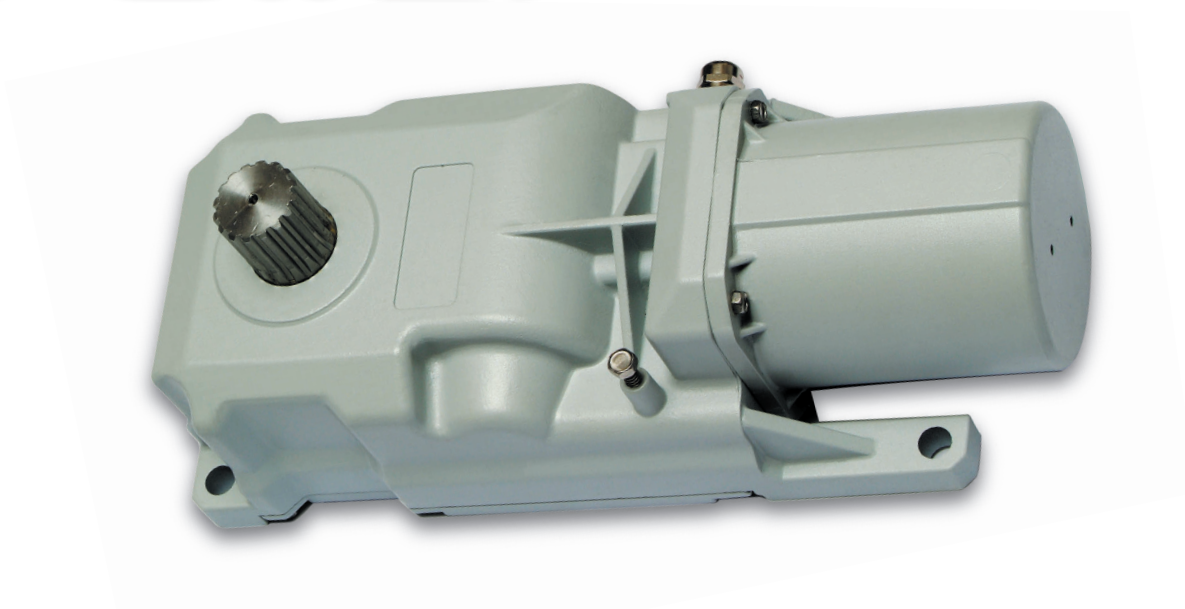


## UNDERGROUND OPERATOR FOR SWING GATES

# roller



### POWERFUL AND INVISIBLE: THE MOVEMENT COMES OUT FROM NOWHERE

- ROLLER is an electro-mechanical underground gearmotor which moves the gate without changing the leaf's appearance.
- It has a patented lever-operated release with lock (standard supply), which can be activated both from inside and outside.

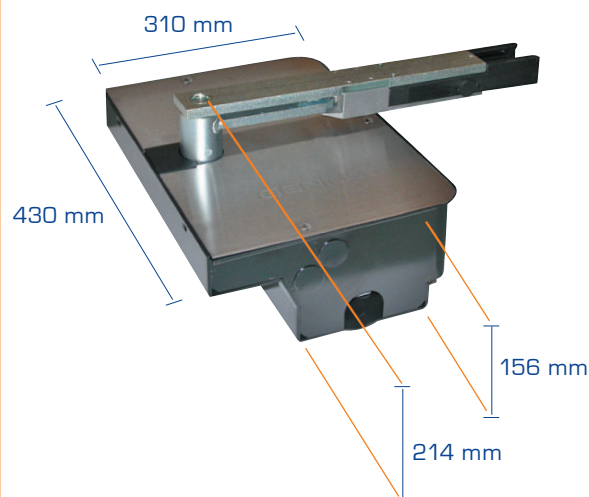
### CREATED FOR HEAVY DUTY

- Protection class IP67.
- The polyester paint is suitable for installations also in saline environments, because it is proof against atmospheric agents.
- Can be housed in three different types of foundation boxes, according to environmental needs.

### HEAVY DUTY APPLICATIONS AND UP TO 180°

- Openings to 180° can be automated, by selecting the appropriate patented release with plate.
- Field of application: up to 3 m and 500 kg max. per leaf, with leaf locking, up to 2 m without an electric lock.
- The 24V models are an important resource to increase the frequency of manoeuvres in case of intensive use.

### DIMENSIONS

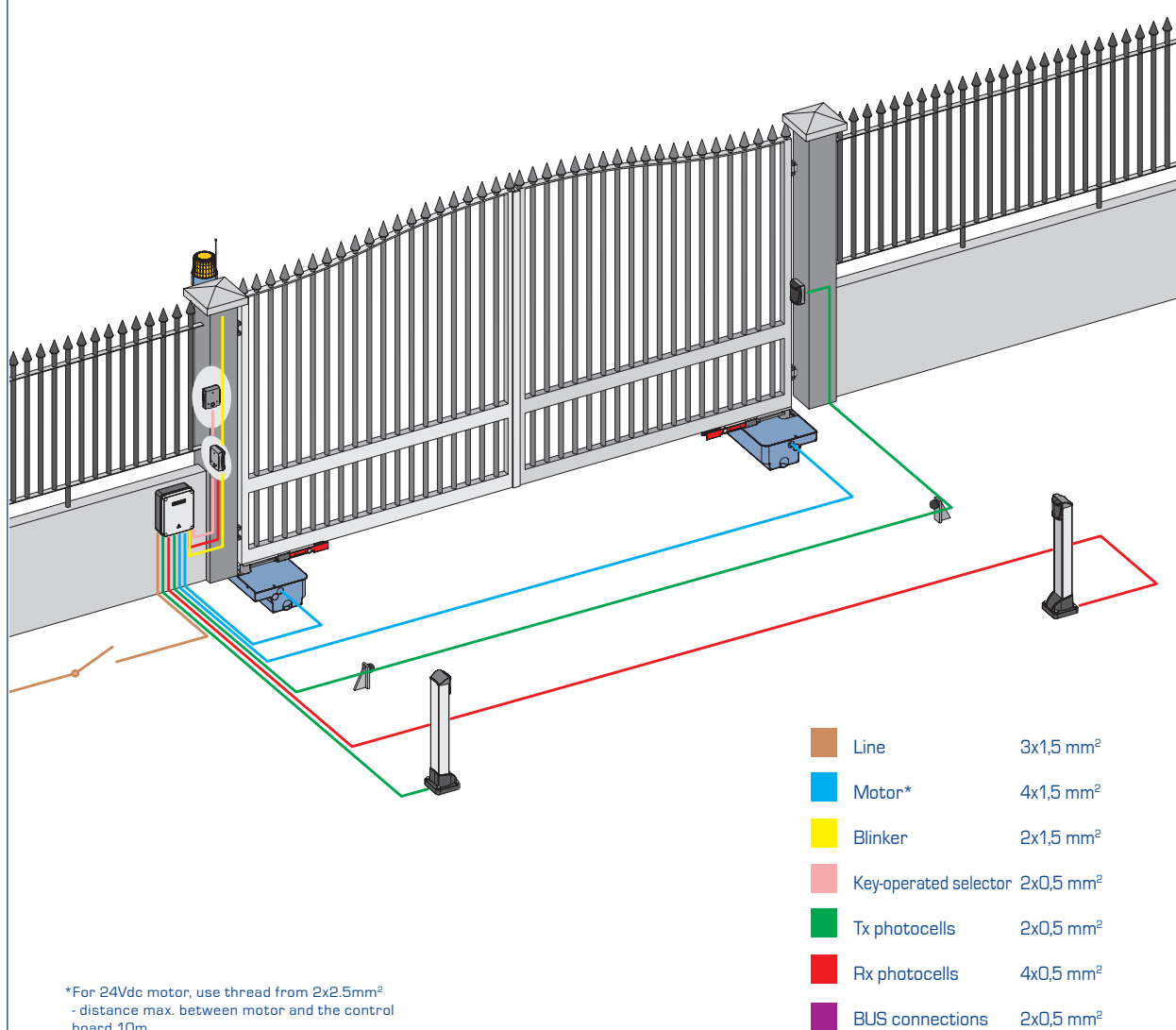


Power supply 24V recommended for an intensive use.

Model	Version	Pcs./Pallet	Code	€
ROLLER 24	Non-reversible 24 Vdc power supply	60	58A0622	
ROLLER LENTO	Non-reversible slow	60	58A0601	
ROLLER	Non-reversible	60	58A0603	

GENIUS 60

## Electric wiring scheme



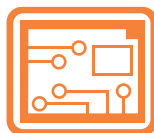
Technical specifications	ROLLER LENTO	ROLLER	ROLLER 24
Power supply (Vac)	230		24
Power (W)	300	380	70
Current (A)	1.3	1.7	3
Heat protection (°C)	140		-
Capacitor (µF)	12.5		-
Max. torque (Nm)	250	330	300
Angular speed (°/sec)	4	6	6
Leaf opening time at 90° (sec) <sup>(1)</sup>	27 (110°/180°) - 15 (140°)	18 (110°/180°) - 10.5 (140°)	18 (110°/180°) - 10.5 (140°)
Max. Leaf length (m) <sup>(1)(2)</sup>	3.5 (110°) - 3 (180°) - 2 (140°)		3.5 (110°) - 3 (180°) - 2 (140°)
Type and frequency of use at 20 °C	S3 - 30%		100%
Indicative hour cycles at 20°C	≥20 (110°/180°) ≥36 (140°)	≥30 (110°/180°) ≥50 (140°)	≥100 (110°/180°) ≥170 (140°)
Operating ambient temperature	-20°C +55°C		-20°C +55°C
Operator weight (Kg)	26.5		26.5
Protection class	IP67		IP67

(1) Opening time and max. leaf dimensions calculated for correctly executed installations at the dimensions indicated in the installation instructions and without slow-downs.

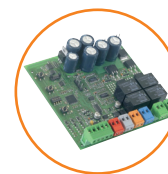
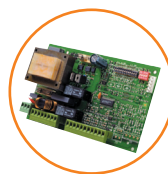
(2) Over 2,00 m, an electric lock is essential to ensure leaf blocking.

GENIUS 61

## CONTROL BOARDS



BRAIN 574 (Page 113)  
BRAIN 592 (Page 113)  
BRAIN 03 (Page 117)  
BRAIN 15 (Page 117)



## ACCESSORES FOR ROLLER



**PATENTED**

### LEVER RELEASE

Lever release 110° opening,  
max. length leaf 3.5 m.

CODE  
58P0045

Lever release for 140° opening,  
max. length leaf 2 m.

CODE  
58P0046



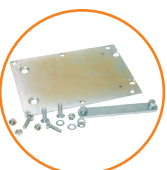
**PATENTED**

### RELEASE WITH PLATE

Release with geared plate for  
180° opening, max. length leaf 3 m.

NB: this accessory allows to wall the foundation in  
any position

CODE  
6100056



### ADAPTER

Adapter for installing ROLLER  
in existing foundation boxes.

CODE  
58P1573



### MAGNETIC LIMIT-SWITCH

Kit composed by one magnetic  
limit-switch IP67 with relevant  
support for fixing a polarized  
magnet carrier disk.

CODE  
6100189



### ROLLER BOX

Self-supporting foundation box  
in steel, with anti-corrosion treatment,  
and cover in galvanised steel.

CODE  
58P0050



### ROLLER BOX EXTRA

Self-supporting foundation box  
in steel, with anti-corrosion treatment,  
and cover in stainless steel.

CODE  
58P0051



### OPENING MECHANICAL STOPS

Opening mechanical stop for levers  
110°/140° (120° max. opening  
possibility for 140° levers) .

CODE  
58P0047



### CLOSING MECHANICAL STOPS

Closing mechanical stop for levers  
110°/140°.

CODE  
58P0048

# The details which make the difference.



## Patented release

It's equipped with a patented lever release with production lock, operating both from the inside and outside.



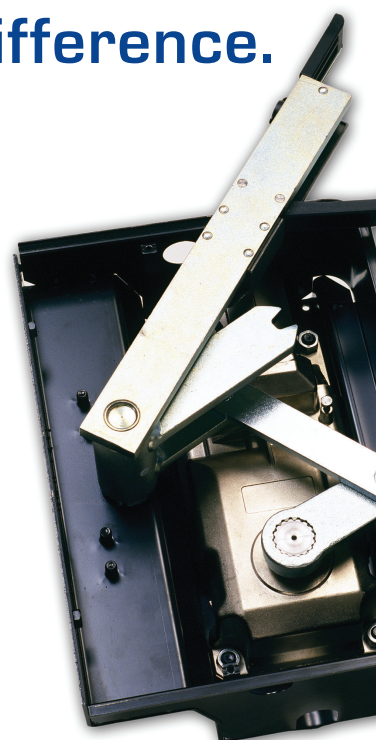
## Magnetic limit-switch

Kit made up of IP67 magnetic limit-switch with respective fixing bearing and a carrier polarized magnet ring.



## Paint motor protection

Polyester painting is suitable for installation also in a saline environment because it does not stand the aggression of atmospheric conditions.



swing gates

## DEVICES



Obstacle  
detections (page 122)



Safety  
(page 124)



Radio controls  
(page 126)



Control  
(page 128)

GENIUS 63