

## OPERATOR FOR SWING GATES

# MISTRAL



### SKILLS AND TECHNOLOGICAL INNOVATION MAKE A COMPLETE PRODUCT

- MISTRAL is among the most complete electro-mechanical operators with in-line axis thrust on the market. It has electric limit switches at both opening and closing for strong, maximum safety automated systems.
- The power cable for outdoor mobile installation, is supplied standard and is easy to maintain.
- As the power cables exit horizontally, Mistral can be installed on the gate, even very close to the ground.
- The release system with lock is entirely protected and enables the leaf to be moved by hand, in case of a power cut.

### LONG LIFE: QUALITY MAKES IT SAFE FOR YOU

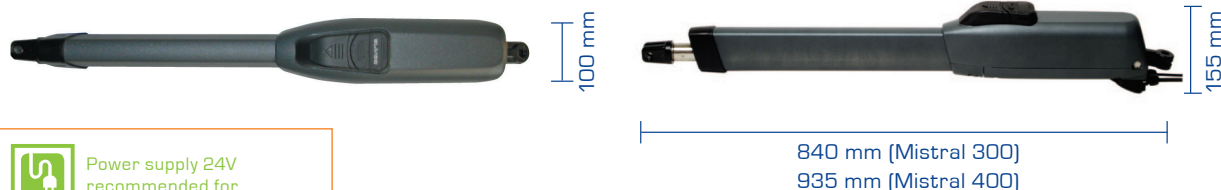
- Aluminium body, with 2-coats of paint for a longer life.
- Stainless steel is used for all components subjected to atmospheric agents.

- LS models with low voltage (24V) electric limit-switches; micrometric adjustment for both opening and closing; with separate inputs enabling a host of functions, such as stop only or start of slow-down. Guaranteed safety for the end-user.

### FIELD OF APPLICATION

- A complete range of models, with 300 mm and 400 mm rod travel versions, to satisfy a host of different requirements; leaves up to 4 m.
- Floating bracket in aluminium to facilitate installation, compensating for any gate structural faults.
- The 24V models are an important resource to increase the frequency of manoeuvres in case of intensive use.

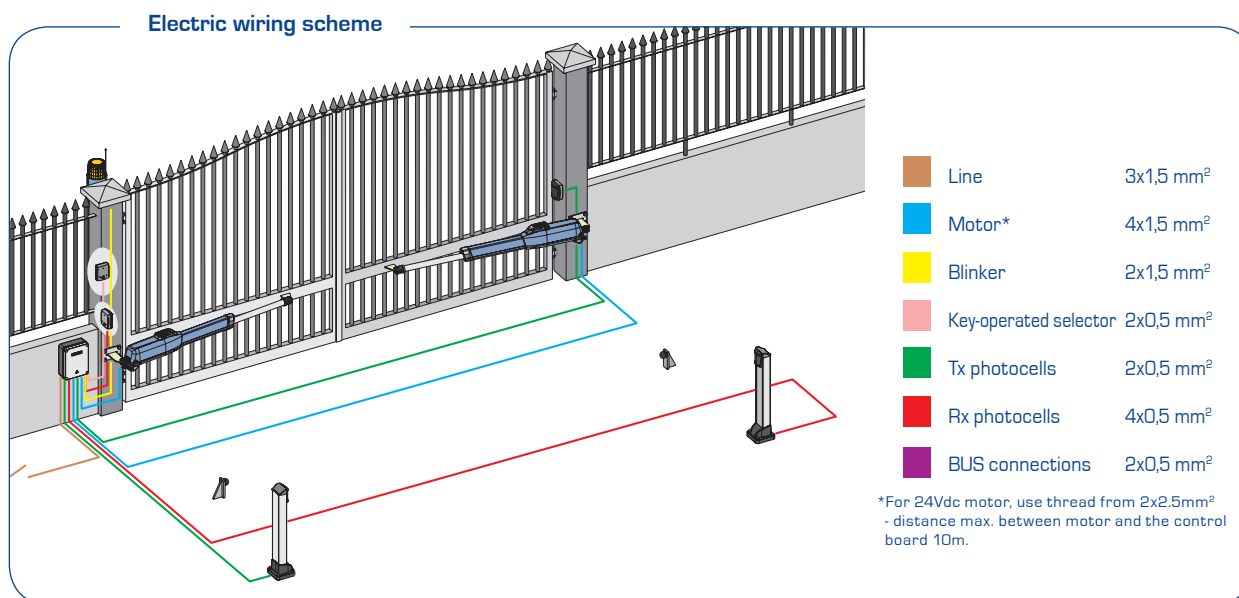
## DIMENSIONS



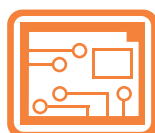
Power supply 24V recommended for an intensive use.

Model	Version	Pcs./Pallet	Code	€
MISTRAL 324	Non-reversible, 24Vdc	42	6170118	
MISTRAL 324 LS	Non-reversible, 24Vdc, opening and closing limit-switches	42	6170119	
MISTRAL 424	Non-reversible, 24Vdc	36	6170122	
MISTRAL 424 LS	Non-reversible, 24Vdc, opening and closing limit-switches	36	6170123	
MISTRAL 300	Non-reversible	42	6170116	
MISTRAL 300 LS	Non-reversible, opening and closing limit-switches	42	6170117	
MISTRAL 400	Non-reversible	36	6170120	
312,00 MISTRAL 400 LS	Non-reversible, opening and closing limit-switches	36	6170121	
MISTRAL 300 R	Reversible	24	6170045	
MISTRAL 300 R LS	Reversible, opening and closing limit-switches	24	6170046	
318,35 MISTRAL 400 R	Reversible	24	6170047	
MISTRAL 400 R LS	Reversible, opening and closing limit-switches	24	6170048	

GENIUS 50

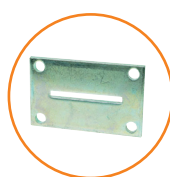


#### CONTROL BOARDS



BRAIN 574 (Page 113)  
BRAIN 592 (Page 113)  
BRAIN 03 (Page 117)  
BRAIN 15 (Page 117)

#### ACCESSORIES



##### PLATE

KIT of 6 tixing plates to screw with a slot, for welding a standard bracket.

CODE  
58P0199



##### BRACKET

KIT of 6 front brackets to screw h. 77 mm.

CODE  
58P0511



##### BRACKET

KIT of 6 back brackets h. 160 mm.

CODE  
6100253



##### TIME CODER

THE TIME CODER is a PATENTED accessory which, when combined with the BRAIN 592 or BRAIN 03 control board, manages the obstacle detection function, also enabling electronic slow-down at opening and closing. Gate real time position reading. (IP66)

CODE  
6100032

Technical specifications	MISTRAL 300	MISTRAL 400	MISTRAL 324	MISTRAL 424
Power supply [Vac]	230		24	
Power [W]	300		70	
Current [A]	1,3		3	
Heat protection [°C]	140		-	
Capacitor [µF]	8		-	
Thrust [daN]	300		280	
Travel [mm]	300	400	300	400
Rod exit speed [cm/sec]	1,6		1,6	
Max. leaf length [m]	3*	4**	3*	4**
Type and frequency of use at 20° C	S3 - 30%		100%	
Indicative hour cycles at 20° C	≥30	≥25	≥100	≥75
Operating ambient temperature	-20°C +55°C		-20°C +55°C	
Operator weight [Kg]	7,8	8,0	7,8	8
Protection class	IP54		IP54	

\* Over 2,50 m, an electric lock is essential to ensure leaf blocking.

\*\* Over 3,00 m, an electric lock is essential to ensure leaf blocking.

#### DEVICES



Obstacle  
detections (page 122)



Safety  
(page 124)



Radio controls  
(page 126)



Control  
(page 128)

GENIUS 51